

*Lycoming County*

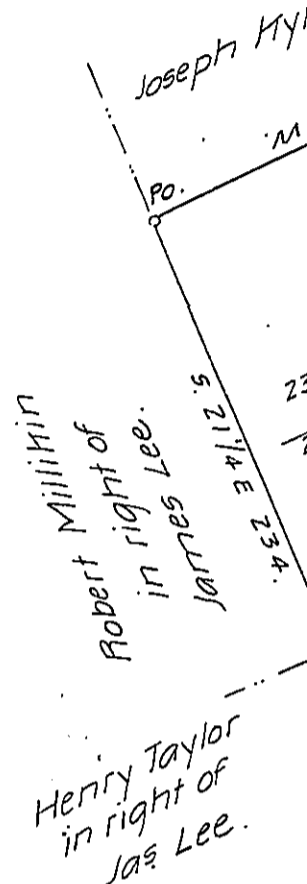
*Henry Tomb.*

*430 acs. 16 ps. & all.*

*Retd & ca Ap! 9th 1839*

25.

*Accepted Ap! 5<sup>th</sup> 1839.*



*land with*

*Mifflin Co*

*surveyed*

*Feb'y 1765*

*Survey M*

*addition*

*Shiff & J*

*Oct. 1837*

*desirous*

*To John*

*Surve*

**IN TEST**